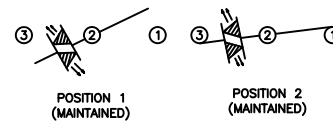


**SCHEMATIC**



**SPECIFICATIONS**

**FUNCTION:**  
1P1T OFF-ON

**RATINGS:**  
UL 1054  
20A 125VAC [cURus]  
16A 250VAC [cURus]  
3/4HP 125/250VAC [cURus]

**ENEC/VDE**  
16(4)A 250V~ 1E4 T85/55 [ENEC10, VDE]  
10(2)A 250V~ 5E4 T85/55 [ENEC10, VDE]  
20(8)A 250V~ 1E4 T125/55 [ENEC10, VDE]

**ILLUMINATION VOLTAGE:**  
12V

**CONTACT RESISTANCE:**  
Initial: 20mΩ Max.

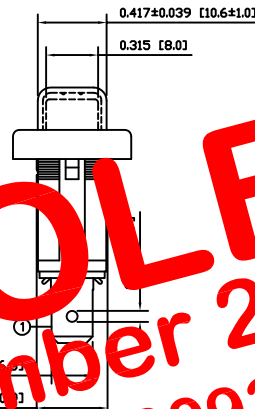
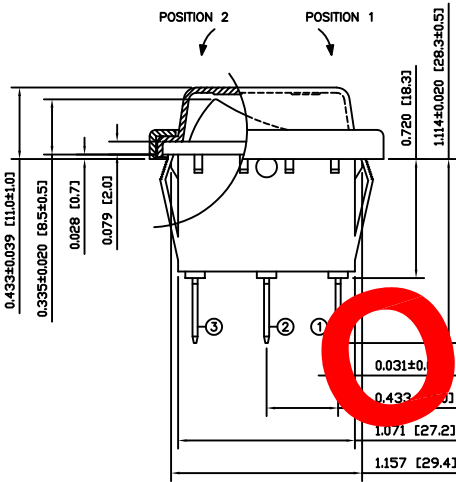
**INSULATION RESISTANCE:**  
100MΩ Min. at 500VDC

**DIELECTRIC STRENGTH:**  
1,000VAC for 1 Minute

**ELECTRICAL LIFE:**  
6,000 Cycles [cURus]  
10,000 Cycles [ENEC10, VDE: 16(4)A 250V~]  
50,000 Cycles [ENEC10, VDE: 10(2)A 250V~]

**TEMPERATURE:**  
Operating: -20°C to 65°C [cURus]  
Operating: -20°C to 125°C [ENEC10, VDE]  
Operating: -20°C to 85°C [ENEC10, VDE]

**APPROVALS:**



**OBSOLETE**  
 November 2017  
 PCR 23093

**COLORS AND MARKINGS**

**BODY:**  
Black

**ACTUATOR:**  
Transparent Red

**MARKINGS:**  
None

**MARKING COLOR:**  
None

**FRAME:**  
Black

**MATERIALS**

**BODY:**  
Polyamide 6/6 (PA66), UL94 V-2

**ACTUATOR:**  
Polycarbonate (PC), UL94 V-2

**LAMP CARRIER:**  
Polyamide 6/6 (PA66), UL94 V-2

**LAMP:**  
LED

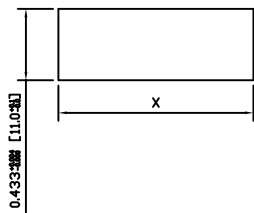
**LAMP SPRING:**  
Steel

**SPRING:**  
Steel

**CONTACTS:**  
Silver Plated Copper

**TERMINALS:**  
Silver Plated Copper  
Silver Plated Brass

**SUGGESTED PANEL CUTOUT**



PANEL THICKNESS		X
0.030~0.049	[0.75~1.25]	1.189 [30.2]
0.049~0.079	[1.25~2.00]	1.201 [30.5]

ACTUATOR	A	09/07/08	CAB
BODY	A	09/07/08	CAB
COLORS	A	09/12/09	CAB
SPECIFICATIONS			
REFERENCE	REV.	DATE	BY

THE INFORMATION CONTAINED IN THIS DOCUMENT IS PROPRIETARY TO E-SWITCH AND IS NOT TO BE COPIED OR TRANSFERRED

B	LAMP FROM INCAND. BULB TO LED, UPDATE SCHEM. AND SPEC.	21826	6/15/2015	MW
A	INITIAL RELEASE	18992	10/02/19	CAB
REV.	DESCRIPTION	PCR	DATE	DRAWN BY

DIMENSIONS	
INCHES [MILLIMETERS]	
GENERAL TOLERANCES	
±0.008 [±0.2] / ±1'	
SCALE	PROJECTION
DRAWING NOT TO SCALE	1st Angle

RB141D1000-114/ACC-F01-1

ITEM NUMBER	DATE	REVISION
14-RB1S00039	FEBRUARY 19, 2010	B